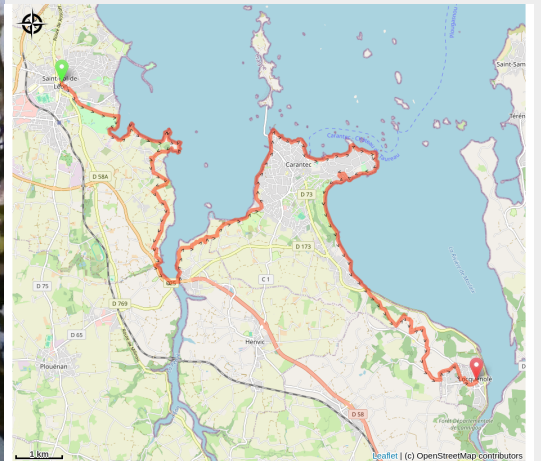


# Saint Pol de Léon à Locquéolé

France - Bretagne



(Amis saint Colomban)



*Ballade sur la côte de la Ceinture Dorée le long de la baie de Morlaix.*

## Useful information

Practice : Pedestrian

Duration : 6 h 54

Length : 27.9 km

Trek ascent : 600 m

Difficulty : Medium

Type : Step

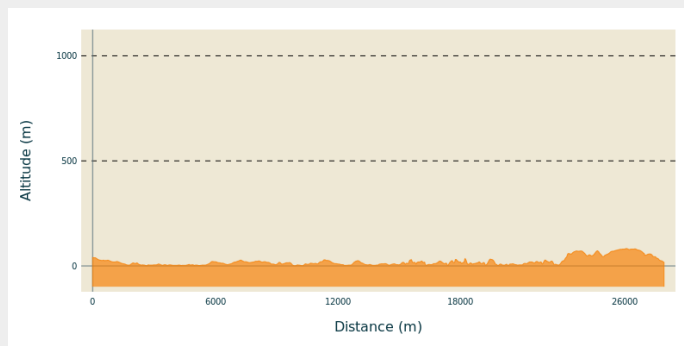
# Trek

**Departure** : Cathédrale St Paul Aurélien –  
Place Alfred de Guébriant - 29250 - Saint  
Pol de Léon

**Arrival** : Eglise St Guénolé – Place de La  
Liberté – 29670 - Locquéolé

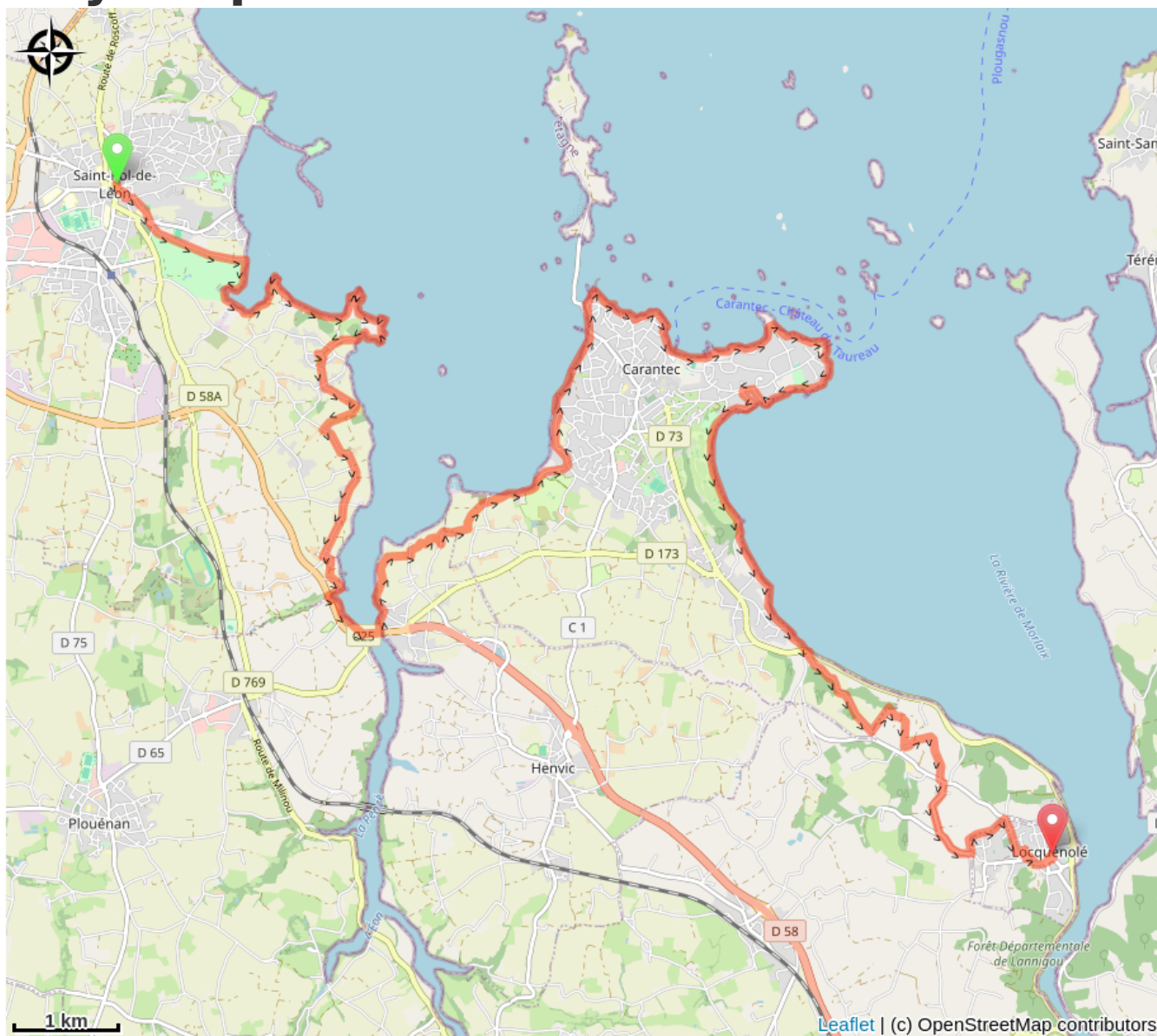
**Cities** : 1. Bretagne

## Altimetric profile



Min elevation 1 m Max elevation 83 m

# On your path...



# All useful information