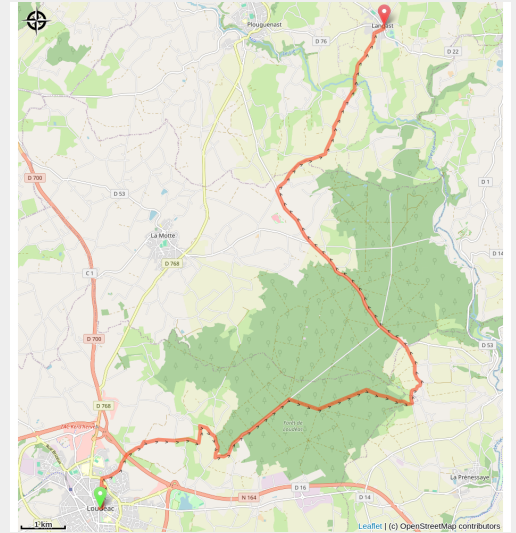


# Loudéac à Langast

France - Bretagne



Langast



## Useful information

Practice : Pedestrian

Duration : 5 h 54

Length : 22.1 km

Trek ascent : 370 m

Difficulty : Medium

Type : Step

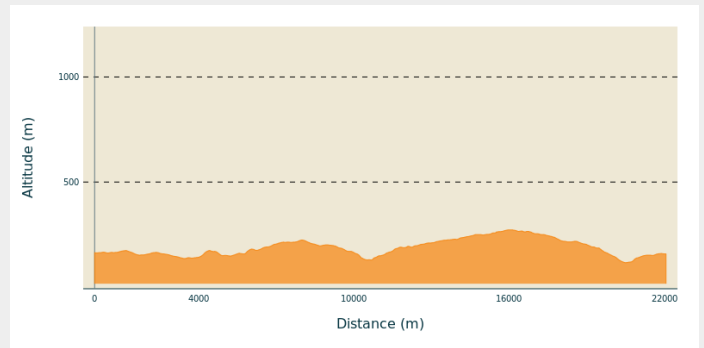
# Trek

**Departure** : Église St Nicolas - Place au Fil - 22600 - Loudéac

**Arrival** : Eglise St Gal - Place du Centre - 22150 - Langast

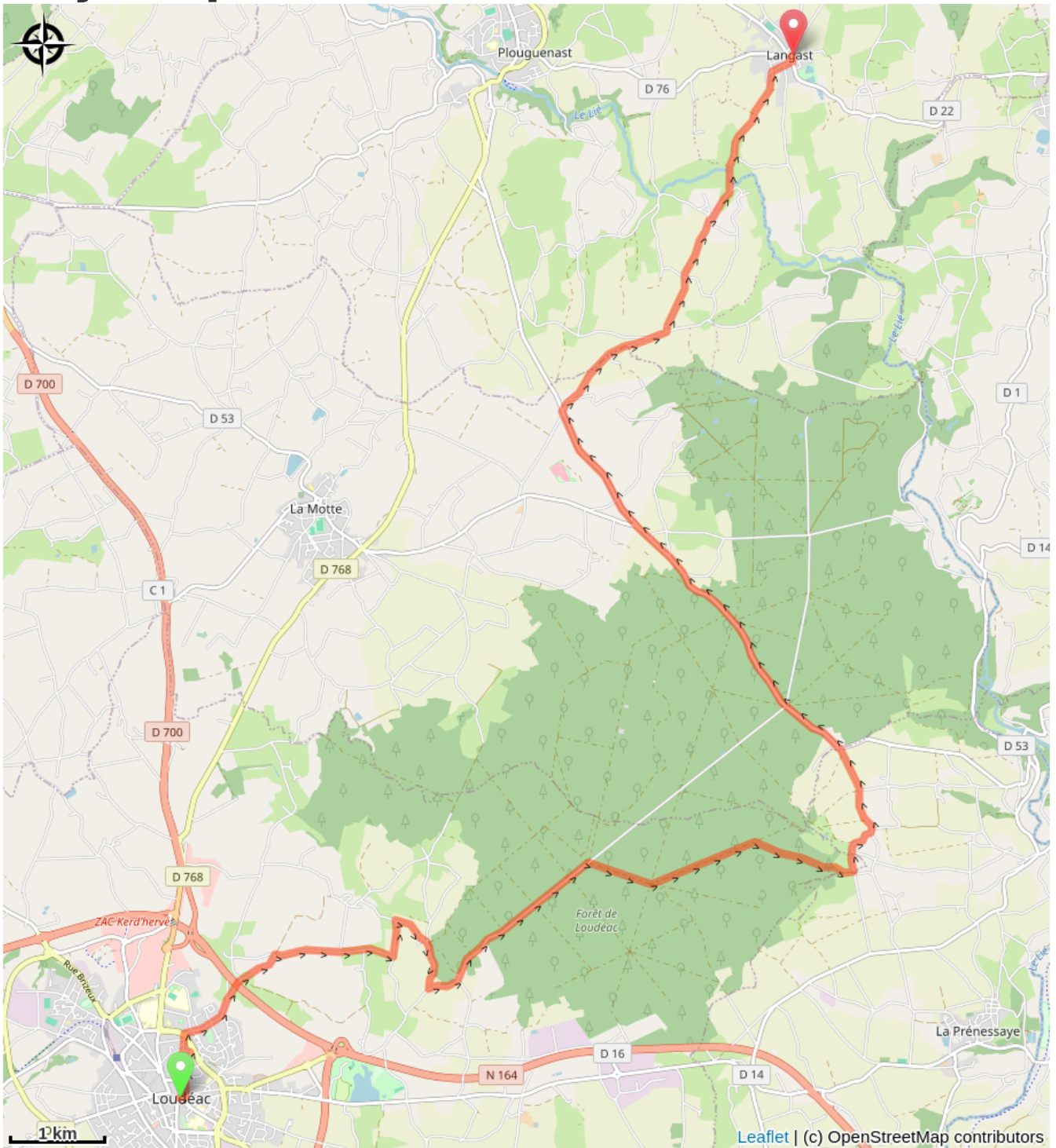
**Cities** : 1. Bretagne

## Altimetric profile



Min elevation 116 m Max elevation 272 m

# On your path...



# All useful information