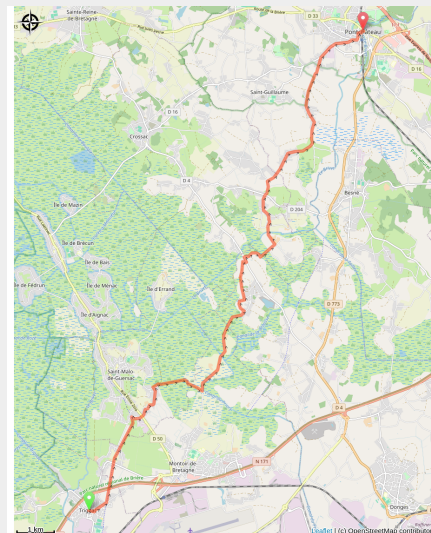


St Nazaire à Pontchâteau

France - Pays de la Loire



Pontchâteau



A travers les marais de La Brière.

Informazioni utili

Pratica : A piedi

Durata : 5 h 24

Lunghezza : 19.6 km

Dislivello positivo : 125 m

Difficoltà : Media

Tipo : Etape

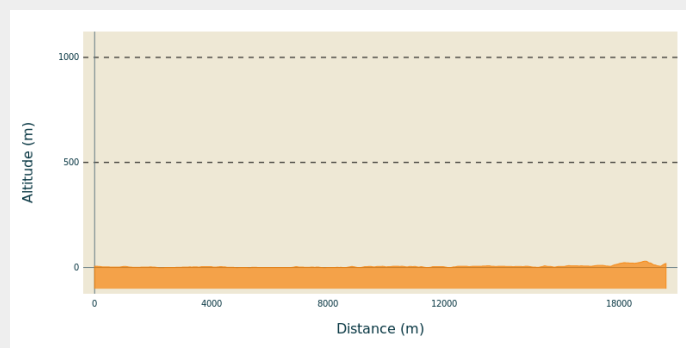
Itinerario

Partenza : Eglise St Eloi, Place de la Mairie, 44570, Trignac

Arrivo : Eglise St Martin, Place de l'église, 44160, Pontchâteau

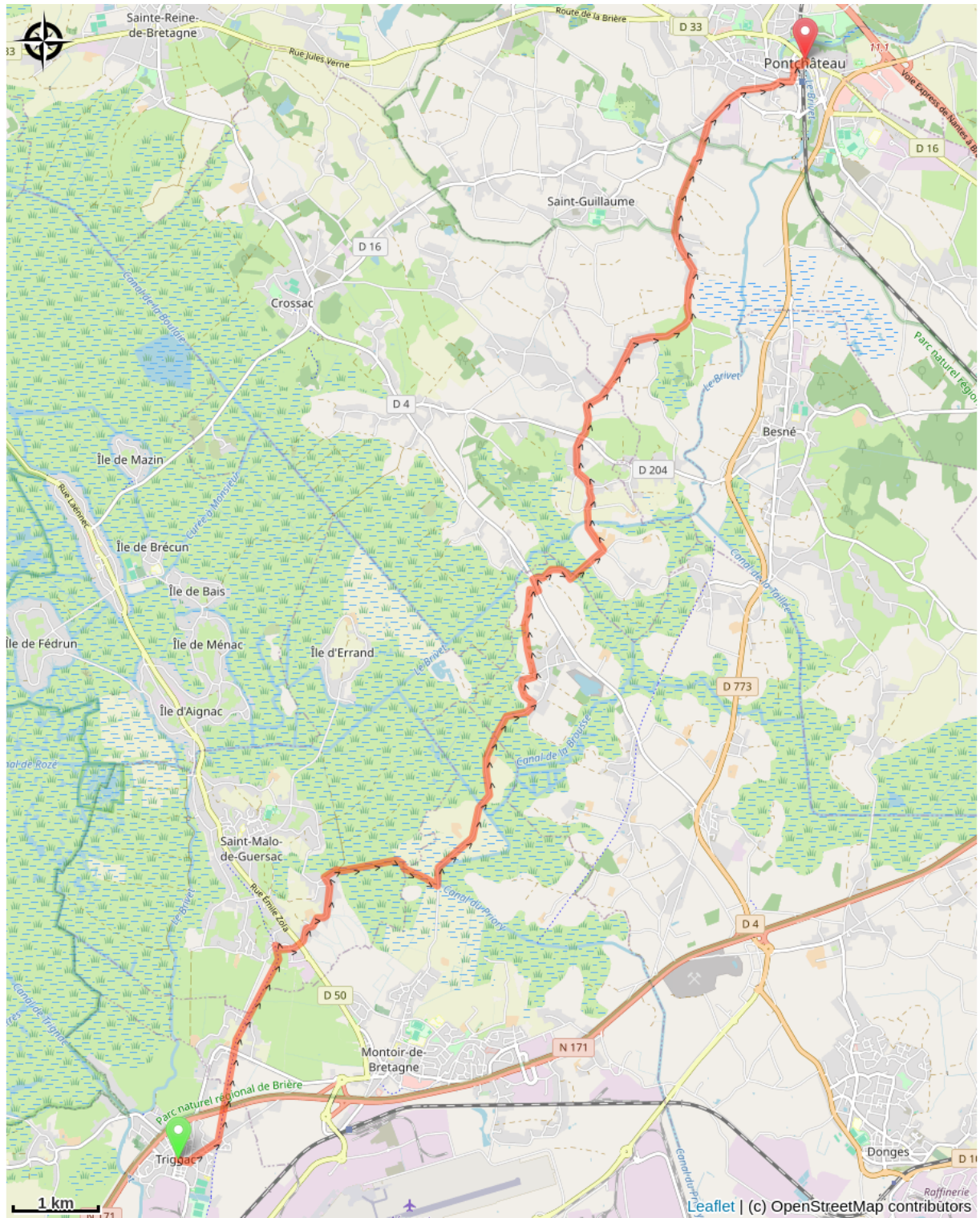
Comuni : 1. Pays de la Loire

Profilo altimetro



Altitudine minima -1 m Altitudine massima 30 m

Sulla tua strada...



Tutte le informazioni utili